



Fetting Lane  
Charlestown  
PL25 3FS

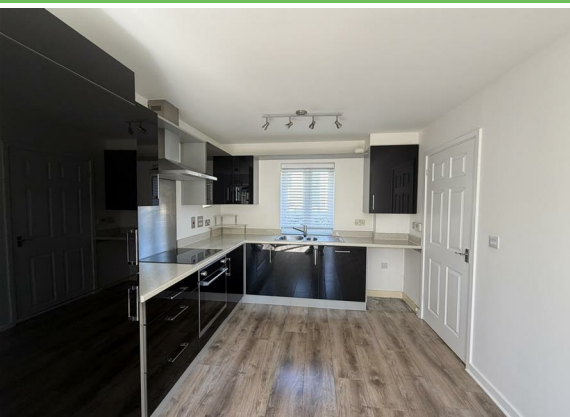
£1,500 PCM

- Contents:  
Unfurnished

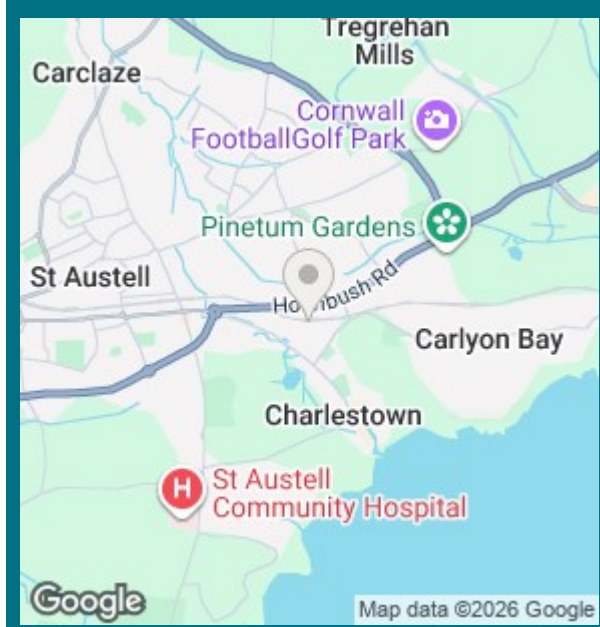
- Deposit Required:  
£1,730

- Date Available:  
2nd April 2026

- Council Tax Band:  
C



 **Millerson**  
Part of Smart Property Group



 3
  2
  1
  C73

**Contact Us**  
 1 Market Street  
 St Austell  
 Cornwall  
 PL25 4BB

[centralsoutheastlettings@smartmillerson.com](mailto:centralsoutheastlettings@smartmillerson.com)  
 01726 72236  
<https://www.millerson.com>

Energy Efficiency Rating		Current	Potential
Very energy efficient - lower running costs			
(92 plus) <b>A</b>			
(81-91) <b>B</b>			
(69-80) <b>C</b>		<b>73</b>	<b>78</b>
(55-68) <b>D</b>			
(39-54) <b>E</b>			
(21-38) <b>F</b>			
(1-20) <b>G</b>			
Not energy efficient - higher running costs			
<b>England &amp; Wales</b>	EU Directive 2002/91/EC	